

MINMETALS DEVELOPMENT CO., LTD.

5



()

.....	1-1-6
.....	1-1-9
.....	1-1-9
.....	1-1-9
.....	1-1-12
.....	1-1-15
.....	1-1-15
.....	1-1-17
.....	1-1-17
.....	1-1-20
.....	1-1-22
.....	1-1-23
.....	1-1-25
.....	1-1-28
.....	1-1-28
.....	1-1-29
.....	1-1-29
.....	1-1-32
.....	1-1-38
.....	1-1-43
.....	1-1-47
.....	1-1-64
.....	1-1-67

.....	1-1-67
.....	1-1-68
.....	1-1-69
.....	1-1-75
.....	1-1-75
.....	1-1-77
.....	1-1-79
.....	1-1-92
.....	1-1-92
.....	1-1-92
.....	1-1-111
.....	1-1-112
.....	1-1-114
.....	1-1-115
.....	1-1-126
.....	1-1-126
.....	1-1-142
.....	1-1-153
.....	1-1-157
.....	1-1-159
.....	1-1-160
.....	1-1-163
.....	1-1-163
.....	1-1-164

.....	1-1-179
.....	1-1-179
.....	1-1-179
.....	1-1-179
.....	1-1-182
.....	1-1-183

.....	1-1-184
.....	1-1-184
()	1-1-187
.....	1-1-188
.....	1-1-189
.....	1-1-190

.....	1-1-191
-------	----------------



10 3

()

()

2006 10

2004 1 1

85.88%

2007 8 8

2007 8 8

2007 6 30

826,972,985

10 3

28.22

61.87%

2007 6 30

(

[2007] V1031)



3mm 20mm
20mm 50mm
3800mm 300mm

ISI
WTO

MINMETALS DEVELOPMENT CO., LTD.

5

600058

1997 5 21

5 B

100044

(010)68494267

(010)68494207

<http://www.minlist.com.cn>

minlist@minmetals.com

()

2007 8 8

2007 9 10 2007

2007 8 10 2007 9

11

“ [2008] 231 ”

()

1

2

1.00

3

826,972,985

10 3

248,091,896

4

(1)

18 /

(2)

A

B

C

D

5

() 446,565

NXAu ³LšCÁ6u đG! È ÑG!]Ô áÔF_ zP] ArÄô A»...¥ò Â á@ = - ŒÄæ@ 6ÄđÆ \•àØZ] fQ•Ü.

8

9

10

2008 2 19 2008 3 3

11

	()
	128
	35
	60

12

()

	2008 2 19 (T-2)	9:30-10:30
	2008 2 20 (T-1)	
	2008 2 21 (T)	
	2008 2 22 (T+1)	
	2008 2 28 (T+5)	

	2008 2 29 (T+6)	
	2008 3 3 (T+7)	

13

A

1

5

(010)68494267

(010)68494207

2 ()

1030

6

(010)84588888

(010)84865023

3

1

(010)85150558

(010)85150559

3

()

36

A 12

(010)58256699

(010)58256633

4

8

A 2

(010)58383636

(010)65547182

5

727

(021)58708888

(021)58899400

6

528

(021)68808888

(021)68807813

7



fl Ł

2003 2004

2005 4

2005

2006 1

7 8

2007

5

2007

2003 7

2004

460 / 2005



110 / 2004 40% 2006
2006
170 / 2007 5

fl Ț



fl ୧

fl ୧

1

WTO

2006

11

WTO

WTO

“

”

100

/ /

2

2004-2006

3

“ ”()

“ ”
“ ”

4

2004

2007 6 18

2007 7 1

fl ㄣ

fl ㄣ

fl 7

fl 7

				2004	2005	2006		
2007	1	6			6.3%	6.2%	8.95%	
9.56%			1.52%	1.38%	2.72%	2.44%	2004	2005

2006 2007 1 6 7.62%

6.71% 16.14% 17.67% 2.02% 2.56% 4.53%

6.13%

“ ”

fl Ț

	2007.6.30	2006.12.31	2005.12.31	2004.12.31
	87.19%	84.53%	89.03%	84.78%
	1.05	1.10	1.08	1.11
	0.61	0.75	0.47	0.64

fl Ț



fl 七

2004	2005	2006	2007	1	6	
2.34%	2.48%	5.67%	6.61%			5.56%
6.48%	3.73%	3.18%				

fl t

1

2

fl 七

fl t

1

2

3

fl t

“

”

fl ₺

1	2007	6	30				
		3				2.5	
			6,000				3.1
2				19.8		5	
4.31							
3	“		”	0005349	“		”
	05000212					344.8	603.64

fl ₺

61.87%

2005

2004

fl Ț

“

”

fl Ț



()

[1997]

567

[1997]40

[1997]35

(“ ”

)

34,587.61

1 1.537

225,000,000

75%

1997 5 5

[1997]160 161

8.52

75,000,000

25%

4,920,000

1.64% 1997 5 21

30,000

[1997]34

1997 5 28

70,080,000

600058

“

” “ ”

1997 11 28

4,920,000

70,080,000

75,000,000

1998 5 29

1997

1997

30,000

10 3

390,000,000

1998	8	14		390,000,000		10	2.3076
							11,588,710
			17.17%				22,500,000
				424,088,710			
2003	6	13		2002			2002
				424,088,710	10	3	3
				551,315,323			
2004	9	28		2004			2004
				2004	6	30	10
				551,315,323			
5				826,972,985			
2006	3	17		[2006]240			
						2006	3
							29
							10
			3				
592,972,985				522,772,985			234,000,000
304,200,000				826,972,985			
()							

				1997		21.74	
2006	764.75		1997	11.31	2006	32.95	2002
			“180 ”	2002 —2007	6		

2007 6 30

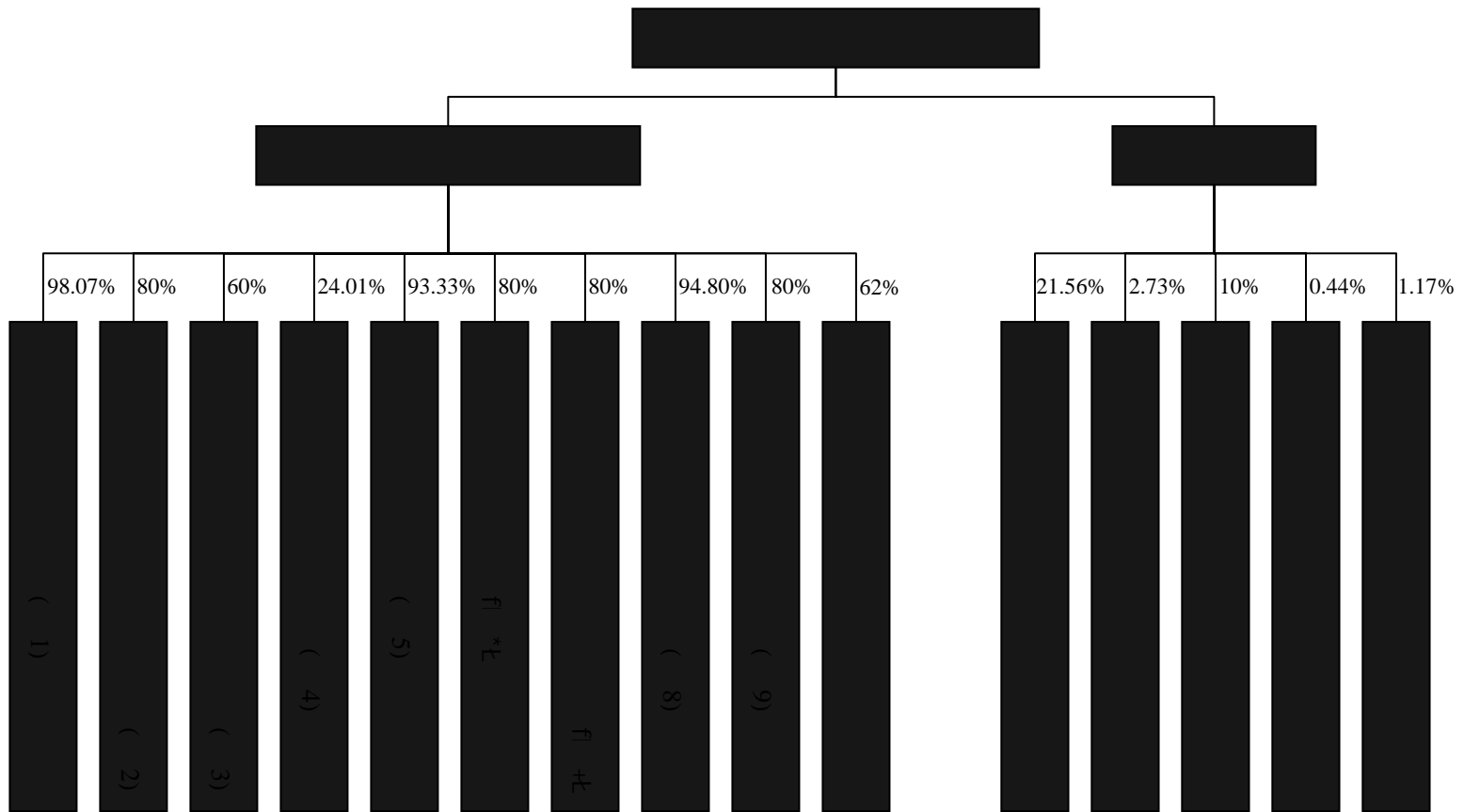
826,972,985

50,770

			()
		63.22%	522,772,985
	A	1.86%	15,350,000
	A	1.10%	9,093,020
	A	0.79%	6,569,500
(LOF)	A	0.69%	5,699,000
	A	0.58%	4,836,610

()

2006 12 31



1				98.07%
	1.93%		100%	
2				80%
		20%	100%	
3				60%
		40%	100%	
4				
	24.01%		49.88%	11.99%
5				93.33%
		5%	1.67%	100%
		90%		
		10%		
6				80%
	20%		100%	
7				80%
		20%	100%	
8				94.80%
	5.20%		100%	90%
			10%	
9				80%
	20%		100%	
1				95%
		5%		
2)				80%
		20%	100%	
3)				
		50%		50%

4-1 2006 12 31

				(%)					2006		
	1987 5	25,954		98.07	501213	38477	2045085	32950			
1	2007 4	1000		80	19755	998	6701	-1.98			
()	2003 7	6,490		60	33,356	9,086	59,104	770			
	2002 6	96,991		21.67	606478	144094	64836	41107			() () () ()
	1997 1	30,000		93.33	1350929	22151	5227748	740			“ ”
	1988 7	3,366		80	81027	23476	23138	4318			
	1998 7	1,352		80	8134	3525	22366	1479			
	1992 11	10,000		94.80	71655	13984	214610	2503			()
	1995 2	1,000		80	6849	1483	2585	362			“ ”
	1987 4	3,697		62	52858	7359	32132	4029			

				(%)					2006		
	1996 12	30,240		21.56%	385,398	107,883	497,860	23,375			,
	2002 12	23791.079		2.73	165,028	86,610	229,809	32,380			,
	2005 5	60,000		10	138,246	60,000	-	-			,
	1994 6	226629.6841		0.44	2,862,598	906,754	2,768,782	142,870			()
	1993 12	40,971.8		1.17	165,984	113,168	181,070	810			()

À 808112K09E,99E5339.54 1243C31B932C320

()

1950 1992
55 7 1999
44 1988

2006 2007
500 435

2,476,086,000

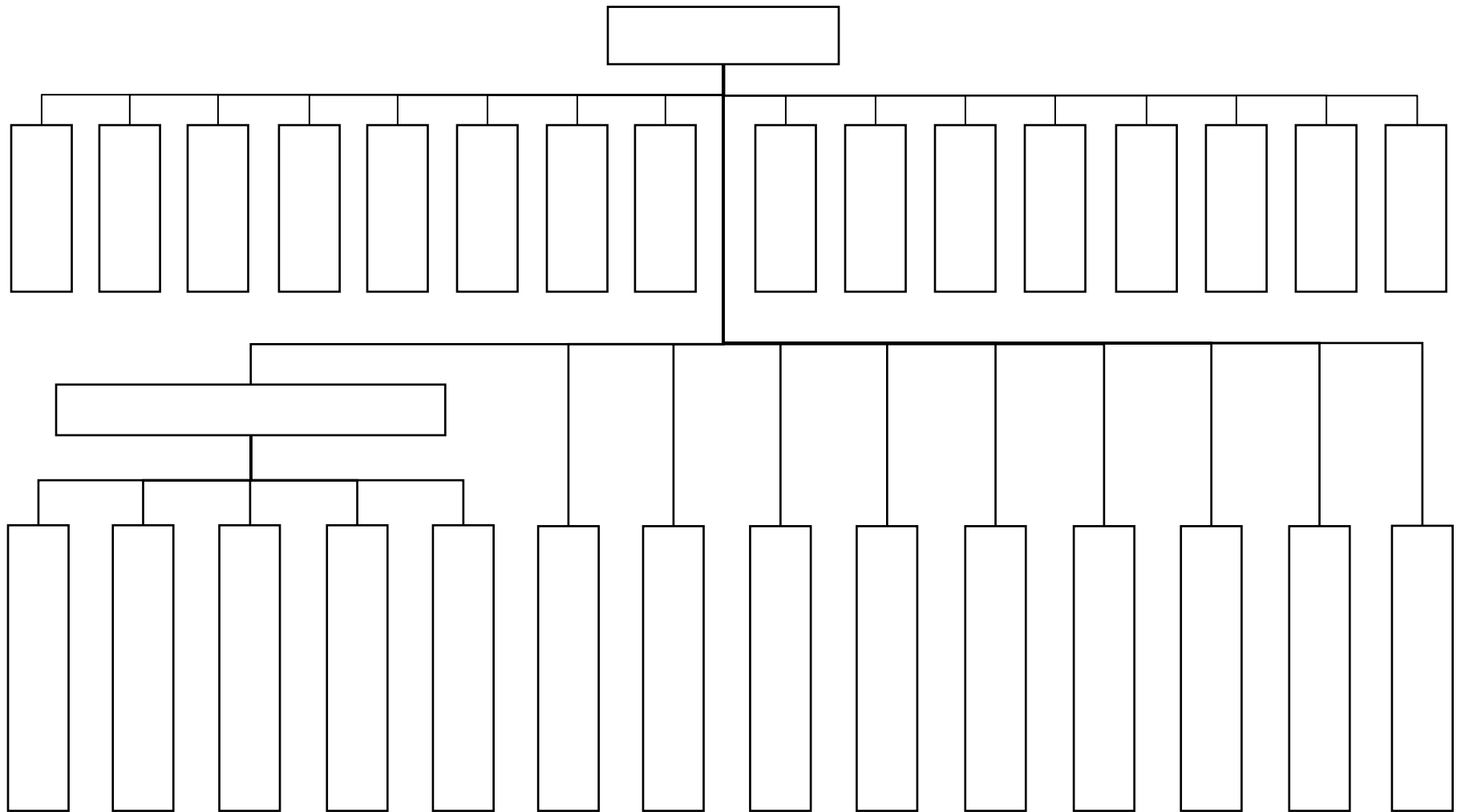
()
()

2006 12 31 524 1,207.5
500

5

2007 6 30	522,772,985	
63.22%	522,772,985	0

()



()

		63.22%
		82.23%
		100%
		100%
		100%
		100%
		100%
		100%
		100%
		62.50%
		100%
		49.88%
		100%
		73.19%
		100%
	()	100%
		60%
		26%
		100%
		100%
		100%
		100%
		100%
		100%
		100%
		100%
		100%
		100%
		100%
		100%
		100%
		100%
		100%
		100%
		100%
		100%
		100%
		100%
		100%
		50%
	100%	
	100%	
	100%	

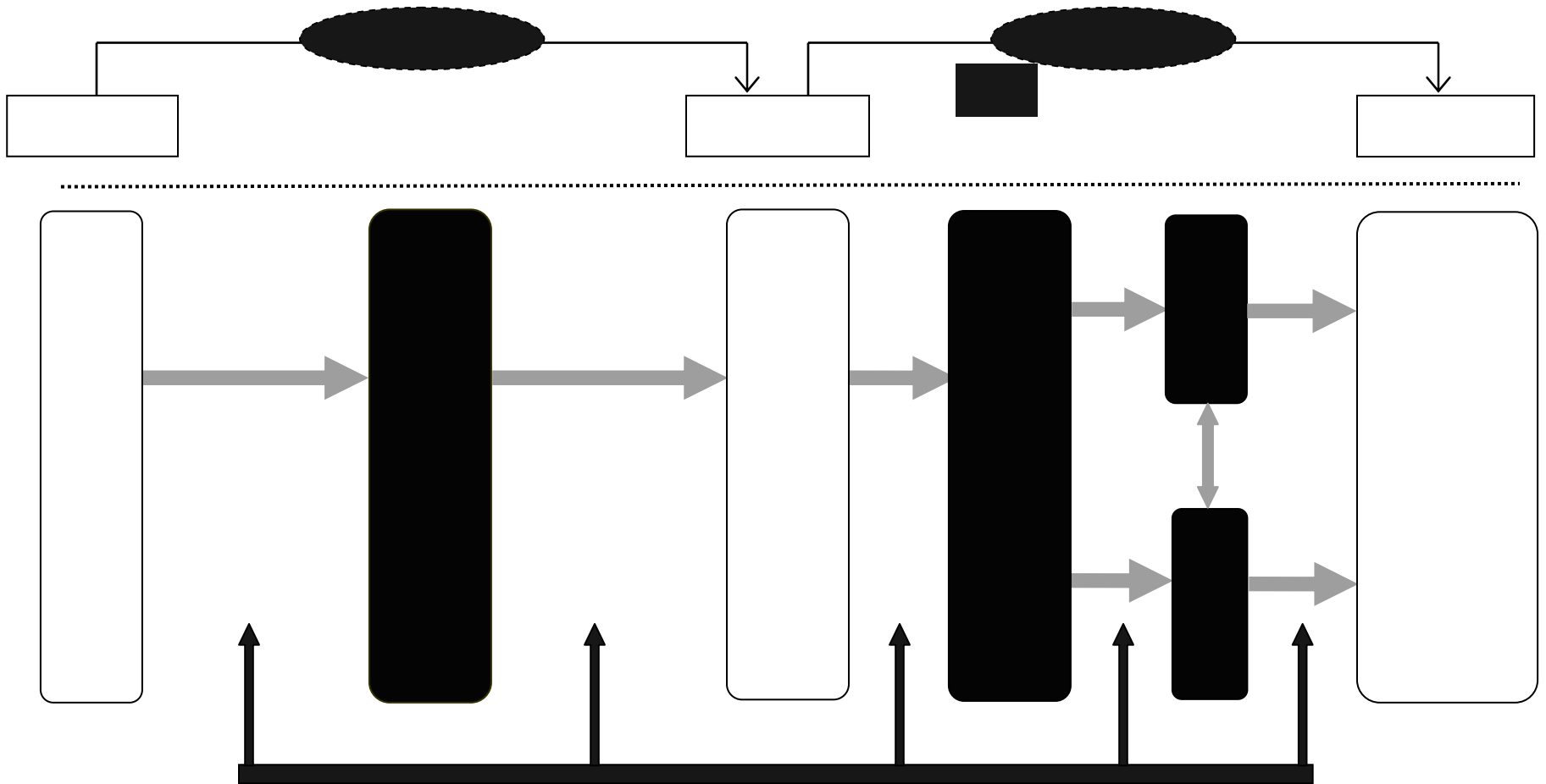
()

fl ㄷ

fl ㄷ

1





2006

204.5

3.3

95.48

931.8

2006

79

302.64



	2006 11	2007
	2007	2007
2 1		
	2004 7 1	
	2004 1 1	
2003 82)	() (
4 1	() (2005 9)	2005
	()	
		2007 5
20	2007 41	
	2002 1 15	(
	26)	
2007 3 10		
	2007 14	2007
		338
	2007	

1

1993
1993
2002 80
2004 160 160
2004 115 2005 165
2006 110
2005 2006 2006 950 / 2006
2007 5 1350 /

2

3

A

4-2

4-2

		2002	2003	2004	2005	2006
		34412	27685	51939	69575	91447
		10270	16304	19473	24195	26604

GDP

4-3

4-3

	2001	2002	2003	2004	2005	2006



4

5

6

40%

50%

15

10

2

%

&

4-4

	()	()	(%)	(%)	(%)	(%)
2004	63,758,069,212.21	61,224,947,076.62	3.97	23.68	21.36	1.83
2005	64,897,513,456.21	63,223,486,127.02	2.58	1.79	3.26	-1.39
2006	75,127,369,863.08	73,118,091,899.35	2.67	15.76	15.65	0.09

4-5 2004

		(%)
	979,480,519.34	1.52
	933,391,942.12	1.45
	808,591,209.33	1.25
	675,474,603.19	1.05
	673,474,782.55	1.04
	4,070,413,056.53	6.30

4-6 2005

		(%)
	918,733,763.50	1.38
	830,710,966.59	1.25
	821,987,284.85	1.23
	819,329,970.02	1.23
	738,523,728.79	1.11
	4,129,285,713.75	6.20

4-7 2006

		(%)
	2,081,418,000.05	2.72
	1,765,005,875.99	2.31
	1,322,710,941.77	1.73
()	887,855,362.64	1.16
	789,130,192.37	1.03
	6,846,120,372.82	8.95

4-8 2007 1-6

		(%)
	910,477,953.22	2.44%
	734,396,989.57	1.96%
	718,733,733.06	1.92%
	651,888,937.95	1.74%
	560,079,343.48	1.50%
	3,575,576,957.28	9.56%

4-10 2004

		(%)
V&M DEUTSCHLAND GMBH	1,195,507,879.04	2.02
LNM MARKETING FZE	1,057,697,229.96	1.78
RISING METAL COMPANY LIMITED	781,610,938.50	1.32
GLORY BUSINESS INTERNATIONAL LTD	775,949,204.22	1.31
METAL ONE CORPORATION	704,975,570.48	1.19
	4,515,740,822.19	7.62

4-11 2005

		(%)
SEVERSTAL EXPORT GMBH	1,837,803,221.25	2.56
	948,832,505.11	1.32
	739,425,372.57	1.03
MMK METAL WORLDWIDE LIMITED	665,533,689.64	0.93
NOBLE RESOURCES LIMITED	631,816,798.93	0.88
	4,823,411,587.50	6.71

4-12 2006

		(%)
	2,989,537,557.58	4.53
	2,336,065,434.70	3.54
	2,125,423,404.99	3.224

	2007 1-6	2006	2005	2004
(%)	17.67	16.14	6.71	7.62

50%

1

1

2

1

4

1

5

2006

4.42

6000

2007

25

3

3

4

17000

300

5

2006

600

2

(1)

(2)

4-15

			(%)	(%)	(%)	(%)
--	--	--	-----	-----	-----	-----

2004	1,653,008,791.54	1,521,190,196.43	7.97	32.09	31.46	0.44
2005	1,705,089,552.53	1,529,475,397.00	10.30	3.15	0.54	2.32
2006	2,146,100,316.42	1,930,806,321.08	10.03	25.86	26.24	-0.27

(3)

4-16 2004

		(%)
	300,223,275.07	18%
SINO MINING TRADING PTY	131,827,323.75	8%
TRANSGLOBE LOGISTICS CO.,LTD.	69,503,309.05	4%
	38,259,313.53	2%
	19,561,942.27	1%
	1,653,008,791.54	34%

4-17 2005

		(%)
	248,527,926.38	15%
	149,210,740.69	9%
SINO MINING TRADING PTY	84,303,173.28	5%
TRANSGLOBE LOGISTICS CO.,LTD.	57,776,070.73	3%
	54,182,824.01	3%
	1,697,197,921.27	35%

4-18 2006

		(%)
	445,472,033.95	21%
SINO MINING TRADING PTY	65,647,020.68	3%
	63,288,325.16	3%
TRANSGLOBE LOGISTICS CO.,LTD.	46,130,317.09	2%
	33,324,596.70	2%
	2,146,100,316.42	30%

4-19 2007

		(%)
	399,892,490.86	28.78%
	51,886,843.56	3.73%
	41,476,587.72	2.98%
	29,998,139.24	2.16%
	9,782,247.27	0.70%
	533,036,308.65	38.36%

4-20

	2007 1-6	2006	2005	2004
(%)	38.36	30	35	34

50%

(4)

4-21 2004

		(%)
	162,955,202.08	11%
	90,617,844.35	6%
	68,516,098.74	5%
	67,119,535.46	4%
	35,236,613.83	2%
	1,521,241,549.33	28%

4-22 2005

		(%)
	171,281,336.12	11%
	115,583,858.33	8%
	98,389,379.18	6%
	49,230,516.92	3%
	38,887,292.51	3%
	1,524,209,180.80	31%

4-23 2006

		(%)
	170,010,027.23	9%

	162,577,905.40	8%
	80,260,888.60	4%
	53,072,045.12	3%
ORIENTAL RINSING(H.K) LIMITED	32,386,023.43	2%
	1,930,806,321.08	26%

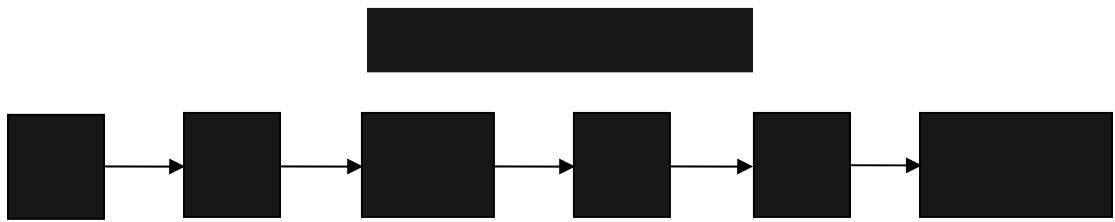
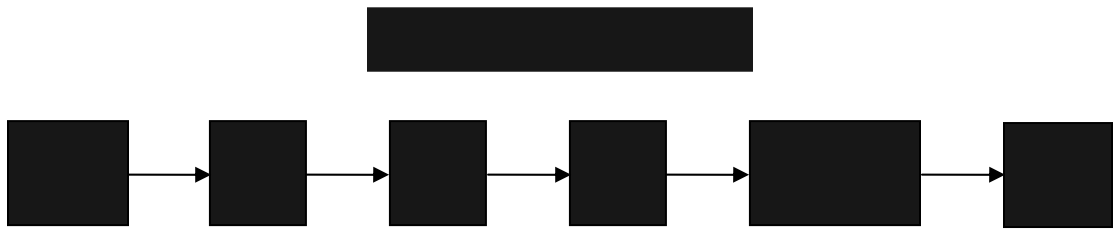
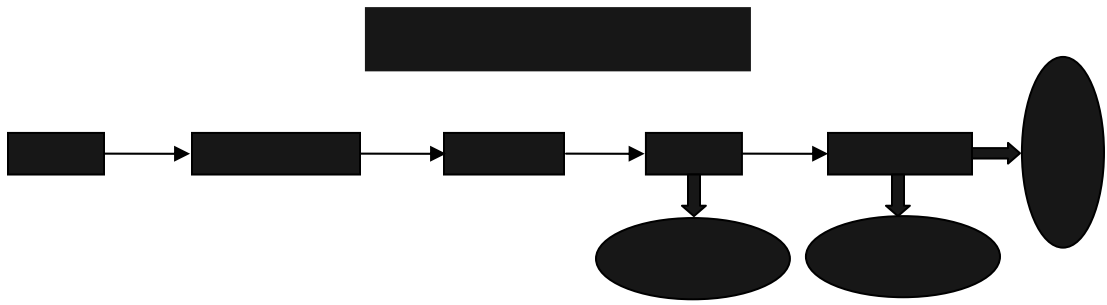
4-24 2007

		(%)
	112,632,478.48	8.78%
	107,374,543.33	8.37%
	53,631,733.64	4.18%
	32,659,330.49	2.55%
	25,883,083.78	2.02%
	332,181,169.72	25.89%

4-25

	2007	1-6	2006	2005	2004
(%)		25.89	26	31	28

50%



1
(1)

(2)

(3)

(4)

2006

13.23

29.90

2

(1)

“ ”

(2)

“

”

3

(1)

			2006		1,201.6
789.5	594	420.5	235		

12

13

47

2006

(2)

(3)

(4)

(5)

()

4-26 2007 6 30

	53,399.78	21,896.96	1,162.07	30,340.76
	34,789.27	9,624.75	769.78	24,394.74
	9,597.71	4,556.52	-	5,041.19
	23,808.07	9,460.67	-	14,347.40
	7,226.82	3,869.90	-	3,356.93
	128,821.65	49,408.78	1,931.85	77,481.01

4-27 2007 6 30

	2004	41.67	38.32	-	3.35	-	
	2005	20.34	9.54	-	10.81	-	
	2003-2007	7,164.81	3,822.04	-	3,342.77	-	
	2004	52.67	7.81	-	44.86	85%	
	1989	5,731.14	1,577.01	1,162.07	2,992.05	52%	
	2003-2004	778.21	189.28	-	588.94	76%	
	2006	5.09	0.12	-	4.96	98%	
	1997-2007	8,904.94	4,631.79	-	4,273.15	48%	
	1987-2007	35,942.40	15,020.44	-	20,921.97	58%	
	2003	-1,985.34	470.50	-	1,514.83	76%	
	2004-2007	1,584.89	335.78	-	1,249.11	79%	
	2003	171.78	166.63	-	5.15	3%	
	2006	11.25	3.23	-	8.02	71%	

	2003-2007	21,224.00	5,266.43	-	15,957.56	75%	
	2003-2007	11,797.34	3,852.67	769.78	7,174.89	61%	
	2002-2007	293.21	107.66	-	185.55	63%	
	2002-2007	2,485.92	982.72	-	1,503.20	60%	
	2002-2007	1,355.48	780.23	-	575.26	42%	
	2002-2007	681.99	119.95	-	562.05	82%	
	2002-2007	3,489.09	2,029.33	-	1,459.76	42%	
	2002-2007	99.64	20.40	-	79.24	80%	
	2002-2007	699.24	300.38	-	398.86	57%	
	2002-2007	493.12	215.84	-	277.28	56%	
	2002-2007	147.18	82.60	-	64.58	44%	
	2002-2007	1,472.86	782.98	-	689.89	47%	
	2002-2007	167.84	118.72	-	49.12	29%	
	2002-2007	233.08	54.95	-	178.13	76%	
	2002-2007	1.65	1.51	-	0.14	9%	
	2002-2007	1,266.85	929.66	-	337.19	27%	
	2002-2007	36.40	16.87	-	19.52	54%	
	2002-2007	20,370.90	7,398.47	-	12,972.42	64%	
	2002-2007	108.37	74.90	-	33.47	31%	
	2002-2007	2.93	0.01	-	2.93	100%	

()

1

4-28 2007 6 30

	342.82	40.05	302.77
	14.50	0.24	14.26
	357.32	40.29	317.03

4-29 2007 6 30

					()	
	2004		342.82	302.77	27	
	2007		14.5	14.26	5	

2

2003 1 15

8

5

2003 1 15

2008

1 15

8

1	4	1810359	MINMETALS LOITIC	2003-01-15 2008-01-15
2	9	1772730	MINMETALS	2003-01-15 2008-01-15
3	14	1923318	MINMETALS; LOITIC	2003-01-15 2008-01-15
4	35	744637	MINMETALS	2003-01-15 2008-01-15
5	36	739425	MINMETALS	2003-01-15 2008-01-15
6	37	749820	MINMETALS	2003-01-15 2008-01-15
7	39	747273	MINMETALS	2003-01-15 2008-01-15
8	42	748579	MINMETALS	2003-01-15 2008-01-15

3

()	34,587.61(1996 12 31)		
			()
	1997 5	A	62,400.0
	1998 8		33,616.5
			96,016.5
()	110,941.61()		
()	354,281.95		

2004 2005

2006

(1)

(2)

A

B

C

~~SECRET~~ 175

2006 2 24

107.69%

()

191 194

1

2

10%

50%

3

4

5

6

7

8

25%

9

2

()

10

()

1 2004

2004

826,972,985

,

10

2.00 ()

2 2005

2005

826,972,985

10 3 () 248,091,895.50
918,927,934.52
3 2006 826,972,985
10 3 () 248,091,895.50
1,144,385,275.50

()

1

54

1978 1993

1993 1994

1994 2000

1997

2000

2000 2002

2002 2004

2004

2 2004 12 2004 12 29

2005 3

51

44

()

78 1952

1978

,

,

1982

1985 5 1993 6

()

,

2002 3

45

1997

1999 12

44

48

43

33

2

48

2005 8

48

50

44

38

48

3

43

47 (EMBA)

()

43

48

43

1987

40

		2007 6 30 fl ȷ	2006
		20,280	32.48
		-	32.37
		-	24.03
		78,042	

2007 6 30

2

(1)

(2)

2006

() 246.88 40

45 1 30 40 4 30 3

116.14

16.8 2006 6

(3)

()

		()	



()

1



()

“

”

1

2

3

4

5

()

2007 6 30

()

1

	2,476,086,000		5		

2

22		
23		
24		
25		
26		
27		
28		
29		
30		
31		
32		
33		
34		
35		
36		
37		
38		
39		
40		

2

“ ” () “

”

()

1

5-1 2007 1-6

		()	(%)	(%)
		98,226,293.72	0.27	0.28
		32,315,377.57	0.09	0.09
		2,112,669,257.57	5.9	6.12
		126,659,103.70	0.35	0.37
		639,709.56	-	-
		119,276.68	-	-
		2,370,629,018.80	6.61	6.86
		46,325,002.40	0.12	0.13
		3,514,682.75	0.01	0.01

		()	(%)	(%)
		60,938,657.78	0.16	0.17
		5,198,260.01	0.01	0.01
		39,227,555.26	0.10	0.11
		992,811.58	-	-
		90,907,778.00	0.24	0.25
		718,733,733.06	1.92	2
		95,952,058.43	0.26	0.27
		39,182,219.49	0.10	0.11
		688,932.49	-	-
		1,101,661,691.25	2.95	3.06

5-2 2006

		()	()	(%)
		90,827,084.49	0.12	0.18
		33,886,994.40	0.05	0.07
		2,989,537,557.58	4.04	6.08
		46,240,744.53	0.06	0.09
		334,867,937.80	0.45	0.68
		134,956,991.00	0.18	0.27
		373,570,214.20	0.50	0.76
		41,128,209.68	0.06	0.08
		110,813,633.33	0.15	0.23
		5,892,278.15	0.01	0.01
		1,040,824.56	0.00	-
		30,598,290.73	0.04	0.06
		4,193,360,760.45	5.67	8.51
		1,322,710,941.77	1.73	1.78
		616,467,141.02	0.81	0.83
		49,993,721.72	0.07	0.07
		127,319,916.95	0.17	0.17
		91,052,364.28	0.12	0.12
		222,110,462.10	0.29	0.30
		43,525,889.30	0.06	0.06
		123,507,892.91	0.16	0.17
		12,510,753.95	0.02	0.02
		22,315,437.98	0.03	0.03
()		21,612,772.55	0.03	0.03
		62,721,327.28	0.08	0.08

		()	()	(%)
		2,715,848,621.81	3.55	3.66

5-3 2005

		()	()	(%)
		118,564,346.61	0.18	0.22
		202,916,811.54	0.31	0.38
		800,437,096.13	1.24	1.51
		245,685,485.25	0.38	0.47
		223,604,937.99	0.35	0.42
		6,944,019.01	0.01	0.01
		1,598,152,696.53	2.48	3.01
		737,831,464.36	1.11	1.14
		67,820,528.53	0.10	0.11
		129,208,489.87	0.19	0.20
		184,504,726.49	0.28	0.28
		54,012,224.46	0.08	0.08
		6,435,028.36	0.01	-
		724,517,991.14	1.09	1.12
		427,649,057.59	0.64	0.66
		175,432.83	-	-
		29,083,571.42	0.04	0.05
		830,337,545.15	1.25	1.28
		918,733,763.50	1.38	1.42
		43,297,727.76	0.07	0.07
		4,153,607,551.46	6.24	6.41

5-4 2004

		()	()	()

		()	()
--	--	-----	-----

		()	(%)	(%)
		5,516,034.96	0.01	0.26
		44,995,230.65	0.06	2.10
		6,257,993.52	0.01	0.29
		2,835,287.23	0.00	0.13
		4,308,734.58	0.01	0.20
		4,215,450.71	0.01	0.20
		135,876,011.31	0.18	6.34

5-7 2005

		()	(%)	(%)
		5,177,445.27	0.01	0.31
		692,264.43	-	0.04
		152,289,359.42	0.23	8.97
		373,421.44	-	0.02
		203,621.35	-	0.01
		281,556.60	-	0.02
		2,312,101.52	-	0.14
		161,329,770.03	0.24	9.51

5-8 2004

		()	(%)	(%)
		6,396,292.80	0.01	0.39
		19,561,942.27	0.03	1.18
		939,430.44	0.00	0.06
		198,012,560.87	0.31	11.98
		7,999,676.37	0.01	0.48
		9,359,462.05	0.01	0.57
		3,642,022.17	0.01	0.22
		245,911,386.97	0.38	14.87

3

(1)

		2007 1-6	2006	2005	2004
		3,881,848.00	7,763,746	7,752,746	7,532,651
		2,873,162.50	5,746,325	5,387,487	5,211,,780

2 2007 29

2007 6 30

9,627.052.50

3 2007

8,000

2007 6 30

8,000

18,405,618.47

4

8,000

2007

6 30

8,000

1,505,520.00

5

2007 6 30

237,217,259.93

4,724,563.01

()

2004

2007

3,347,967,783.83

4,153,607,551.46

2,715,848,621.81

1,101,661,691.25

5.18%

6.24%

3.55%

2.95%

2004

2007

1,450,784,927.28

1,598,152,696.53

4,193,360,760.45

2,370,629,018.80

2.34%

2.48%

5.67%

6.61%

2004

2007

245,911,386.97

161,329,770.03

135,876,011.31

85,872,143.90

14.87%

9.51%

6.34%

6.18%



()

1 2004 10

100

90

6,839.3

10%

6,217.54

2 2004

2,863,541.40

30%

3 2005

51%

255

498.04

4 2006

(“ ”)

()

800

	“	”)		(“	”)
		()		
	3,375	45		2,250	30%
	937.5		12.5%		
				25%	
6	2006				10%
		74,579,300			
7	2007	6	28		
289,849.58		()		61.87
	24.01				
()				
1	2004	10			
				100	
			90		
2	2004		2,863,541.40		
		30%			
3	2005				
		51%	255		
4	2006				(
)			800	80%	200
20%					

5 2006

“ ”) (“ ”)
()

6 2006

74,579,300

10%

7 2007 6 28

2,898,495,783.03

24.01

() 61.87

()

1

(1)

A

B

300

(
5%)

C

(2) (“ ”)

A

i

ii

iii

iv

B () 3000 5

C 5

(3)

A (300

5%)

B

C

D

E

F

2

()

1 2003 18

2003

1

2 1 2003 1 1 2003 12 31
30

3

A /

B

C /

2 2003

1

2 1 2003 1 1 2003 12 31
30

3

3 2006

1

1

30

2

A

/

B

C

/

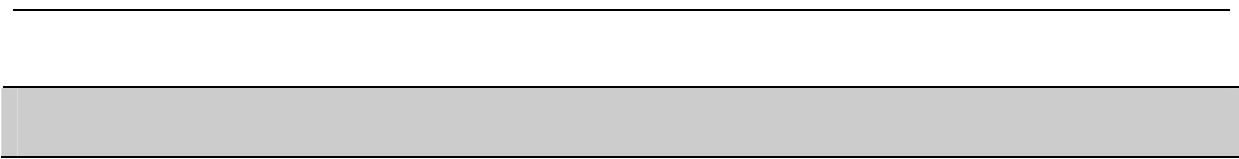
()

2004

2007

“

”



1 2005 3 30 2004
(“ (2005) 019
”)
2 2006 4 6 2005
(“ (2006) 018
”)
3 2007 4 5 () 2006
(“
(2007)GF 010010 ”)
4 2007 8 14 () 2007 1
6 (“
2007 GF 010040 ”)
5 2007 8 20 ()
(“ 2007 GF 010054 ”)
6 2007 8 14 ()
“ (2007) 010220 ”

() **2007**

2007 6 30

6-1

	2007.6.30	2006.12.31	2007.6.30	2006.12.31
	1,898,887,076.94	1,656,196,605.38	192,946,744.07	566,628,236.77
	-	-	-	-
	247,478,187.75	88,348,000.33	-	-
	1,799,214,667.90	1,286,866,595.73	-	-
	10,389,072,895.88	10,114,832,800.60	-	10,920,000.00
	-	-	-	-
	528,957.16	245,653.61	-	-
	286,487,147.65	284,499,853.62	927,397,290.86	1,183,505,184.72
	10,553,133,668.82	6,415,132,799.43	-	-
	-	-	-	-
	-	-	-	-
	25,174,802,602.10	19,846,122,308.70	1,120,344,034.93	1,761,053,421.49
	178,427,562.84	78,127,498.40	178,427,562.84	78,127,498.40
	-	-	30,000,000.00	30,000,000.00
	-	-	-	-
	1,233,342,931.35	753,255,668.01	2,139,839,901.97	1,800,384,761.22
	11,470,263.85	11,887,020.59	6,847,909.89	6,857,041.89
	774,810,080.68	414,898,462.87	2,949,862.96	3,209,501.94
	1,500,556.66	232,721,129.84	-	-
	-	-	-	-
	-	-	-	-
	3,170,311.75	3,075,268.88	-	-
	-	-	-	-
	-	-	-	-
	3,551,786.37	2,886,429.14	-	-
	286,280,639.85	169,671,302.67	40,378,373.74	39,164,953.73
	-	-	-	-
	2,492,554,133.35	1,666,522,780.40	2,398,443,611.40	1,957,743,757.18
	27,667,356,735.45	21,512,645,089.10	3,518,787,646.33	3,718,797,178.67

6-2

	2007.6.30	2006.12.31	2007.6.30	2006.12.31
	2,783,224,548.45	868,426,042.45	-	-
	-	-	-	-
	12,431,924,343.17	10,715,025,641.76	-	-
	2,348,049,130.56	686,532,816.55	-	-
	5,550,192,963.94	5,200,672,766.24	-	-
	233,027,110.78	199,045,210.78	24,929,426.39	21,951,365.66
	283,758,993.44	32,911,189.89	7,389,340.94	7,761,915.56
	450,900.00	214,200.00	-	-
	263,026,092.14	307,064,982.88	395,194,832.19	532,501,335.50
	-	-	-	-
	-	-	-	-
	23,893,654,082.48	18,009,892,850.55	427,513,599.52	562,214,616.72
	182,912,246.00	182,943,470.60	-	-
	-	-	-	-
	-	-	-	-

6-3

	2007 1-6		2006 1-6	
	2007	1-6	2006	1-6
	37,384,543,140.74	35,892,907,181.47	305,878.81	211,372.00
	37,384,543,140.74	35,892,907,181.47	305,878.81	211,372.00
	36,945,493,572.19	35,662,910,013.62	14,054,625.98	7,662,082.76
	35,789,301,485.82	34,829,740,810.89	429,955.00	48,273.46
	103,018,263.23	31,708,164.77	-	-
	313,304,366.91	353,909,950.39	-	-
	357,254,169.67	282,011,344.83	29,880,403.28	22,773,212.51
	23,571,531.62	145,460,921.70	-16,340,392.48	-13,938,229.28
	359,043,754.94	20,078,821.04	84,660.18	-1,221,173.93
“_”	-	-	-	-
“_”	98,006,298.00	45,821,531.01	95,018,643.08	207,067,414.01
	93,436,214.74	41,295,655.99	90,647,256.58	43,084,416.54
“_”	537,055,866.55	275,818,698.86	81,269,895.91	199,616,703.25
	2,525,242.52	27,864,495.11	-	18,061,014.93
	1,016,001.70	2,929,791.91	-	16,880.31
	-	-	-	-
“_”	538,565,107.37	300,753,402.06	81,269,895.91	217,660,837.87
	148,604,948.38	88,411,198.23	-1,213,420.01	4,485,301.03
“_”	389,960,158.99	212,342,203.83	82,483,315.92	213,175,536.84
	385,047,805.12	205,226,230.19	82,483,315.92	213,175,536.84
	4,912,353.87	7,115,973.64	-	-
	0.4656	0.2482	-	-

6-4

	2007	1-6	2006	1-6	2007	1-6	2006	1-6
	39,504,222,289.22		32,151,679,401.63		-		-	
	127,304,010.73		81,552,802.22		-		-	
	75,107,818.35		98,778,074.04		323,789,431.57		1,874,310,533.20	
	39,706,634,118.30		32,332,010,277.89		323,789,431.57		1,874,310,533.20	
	39,701,865,777.28		26,083,650,772.54		-		-	
	202,975,848.59		149,148,294.73		4,973,948.38		7,225,178.63	
	360,601,787.49		348,966,858.32		7,775,293.39			
	310,531,041.58		207,497,236.23		179,582,690.24		112,829,415.72	
	40,575,974,454.94		26,789,263,161.82		192,331,932.01		120,054,594.35	
	-869,340,336.64		5,542,747,116.07		131,457,499.56		1,754,255,938.85	
	-		-		-		-	
	101,617,528.50		3,291,334.13		488,940,684.14		3,125,242.48	
	1,434,782.41		18,696,010.67		-		18,088,730.26	
	-		-		-		-	
	10,000,000.00		-		-		-	
	113,052,310.91		21,987,344.80		488,940,684.14		21,213,972.74	
	138,146,857.87		79,056,494.48		306,836.00		122,440.00	
	527,433,724.56		-		726,323,867.40		201,000,000.00	
	-		-		8,000,000.00		-	
	-		-		-		-	
	665,580,582.43		79,056,494.48		734,630,703.40		201,122,440.00	
	-552,528,271.52		-57,069,149.68		-245,690,019.26		-179,908,467.26	
	27,280,000.00		-		-		-	
	27,280,000.00		-		-		-	
	7,597,875,627.67		7,691,568,213.80		4,250,000,000.00		3,750,000,000.00	
	-		-		-		-	
	7,625,155,627.67		7,691,568,213.80		4,250,000,000.00		3,750,000,000.00	
	5,652,905,754.80		12,571,037,600.13		4,250,000,000.00		5,180,000,000.00	
	307,690,793.15		298,529,033.66		259,448,973.00		63,351,360.00	
	-		-		-		-	
	-		-		-		-	
	5,960,596,547.95		12,869,566,633.79		4,509,448,973.00		5,243,351,360.00	
	1,664,559,079.72		-5,177,998,419.99		-259,448,973.00		-1,493,351,360.00	
	-		-457,477.36		-		-	
	242,690,471.56		307,222,069.04		-373,681,492.70		80,996,111.59	
	1,656,196,605.38		1,469,492,986.72		566,628,236.77		119,016,647.86	
	1,898,887,076.94		1,776,715,055.76		192,946,744.07		200,012,759.45	

6-5

2007 1-6

	826,972,985.00	666,743,607.36	-	409,309,056.38	-	1,392,477,171.00	-	33,144,717.28	3,328,647,537.02
	-	23,701,974.10	-	-4,770,314.07	-	-42,932,826.68	-	281,430.63	-23,719,736.02
	-	-	-	-	-	-	-		

6-6

2006 1-6

	826,972,985.00	664,357,149.12	-	353,356,054.67	-	1,167,019,830.02	-	18,769,305.75	3,030,475,324.56
	-	-3,156,099.17	-	-8,540,796.27	-	-76,867,166.32	-	-	-88,564,061.76
	-	-	-	-	-	-	-	-	-
	826,972,985.00	661,201,049.95	-	344,815,258.40	-	1,090,152,663.70	-	18,769,305.75	2,941,911,262.80
"_"	-	23,318,877.70	-	-	-	-42,865,665.31	-	7,115,973.64	-12,430,813.97
	-	-	-	-	-	205,226,230.19	-	7,115,973.64	212,342,203.83
	-	23,318,877.70	-	-	-	-	-	-	23,318,877.70
1	-	33,583,928.20	-	-	-	-	-	-	33,583,928.20
1	-	33,583,928.20	-	-	-	-	-	-	33,583,928.20
2	-	-	-	-	-	-	-	-	-
2	-	-	-	-	-	-	-	-	-
1	-	-	-	-	-	-	-	-	-
2	-	-	-	-	-	-	-	-	-
3	-	-	-	-	-	-	-	-	-
3	-	817,645.81	-	-	-	-	-	-	817,645.81
4	-	-11,082,696.31	-	-	-	-	-	-	-11,082,696.31
5	-	-	-	-	-	-	-	-	-
	-	23,318,877.70	-	-	-	205,226,230.19	-	7,115,973.64	235,661,081.53
	-	-	-	-	-	-	-	-	-
1	-	-	-	-	-	-	-	-	-
2	-	-	-	-	-	-	-	-	-
3	-	-	-	-	-	-	-	-	-
	-	-	-	-	-	248,091,895.50	-	-	248,091,895.50
1	-	-	-	-	-	-	-	-	-
2	-	-	-	-	-	-	-	-	-
3	-	-	-	-	-	248,091,895.50	-	-	248,091,895.50
4	-	-	-	-	-	-	-	-	-
	-	-	-	-	-	-	-	-	-
1	-	-	-	-	-	-	-	-	-
2	-	-	-	-	-	-	-	-	-
3	-	-	-	-	-	-	-	-	-
4	-	-	-	-	-	-	-	-	-
5	-	-	-	-	-	-	-	-	-
	826,972,985.00	684,519,927.65	-	344,815,258.40	-	1,047,286,998.39	-	25,885,279.39	2,929,480,448.83

6-7

2007 1-6

	826,972,985.00	666,743,607.36	409,309,056.38	1,392,477,171.00	3,295,502,819.74
	-	23,701,974.10	-17,334,550.85	-156,010,957.72	-149,643,534.47
	-	-	-	-	-
	826,972,985.00	690,445,581.46	391,974,505.53	1,236,466,213.28	3,145,859,285.27
“_”	-	67,201,043.17	-	-165,608,579.58	-98,407,536.41
	-	-	-	82,483,315.92	82,483,315.92
	-	67,201,043.17	-	-	67,201,043.17
1	-	100,300,064.44	-	-	100,300,064.44
1	-	100,300,064.44	-	-	100,300,064.44
2	-	-	-	-	-
2	-	-	-	-	-
1	-	-	-	-	-
2	-	-	-	-	-
3	-	-	-	-	-
3	-	-	-	-	-
4	-	-33,099,021.27	-	-	-33,099,021.27
5	-	-	-	-	-
	-	67,201,043.17	-	82,483,315.92	67,201,043.17
	-	-	-	-	-
1	-	-	-	-	-
2	-	-	-	-	-
3	-	-	-	-	-
	-	-	-	248,091,895.50	248,091,895.50
1	-	-	-	-	-
2	-	-	-	-	-
3	-	-	-	248,091,895.50	248,091,895.50
4	-	-	-	-	-
	-	-	-	-	-
1	-	-	-	-	-
2	-	-	-	-	-
3	-	-	-	-	-
4	-	-	-	-	-
5	-	-	-	-	-
	826,972,985.00	757,646,624.63	391,974,505.53	1,070,857,633.70	3,047,451,748.86

6-8

2006 1-6

	826,972,985.00	664,357,149.12	353,356,054.67	1,136,992,051.10	2,981,678,239.89
	-	-3,156,099.17	-18,789,001.66	-169,101,014.87	-191,046,115.70
	-	-	-	-	-
	826,972,985.00	661,201,049.95	334,567,053.01	967,891,036.23	2,790,632,124.19
“_”	-	23,318,877.70	-	-34,916,358.66	-11,597,480.96
	-	-	-	213,175,536.84	213,175,536.84
	-	23,318,877.70	-	-	23,818,877.70
1	-	33,583,928.20	-	-	33,583,928.20
1	-	33,583,928.20	-	-	33,583,928.20
2	-	-	-	-	-
2	-	-	-	-	-
1	-	-	-	-	-
2	-	-	-	-	-
3	-	-	-	-	-
3	-	817,645.81	-	-	817,645.81
4	-	-11,082,696.31	-	-	-11,082,696.31
5	-	-	-	-	-
	-	23,318,877.70		213,175,536.84	236,494,414.54
					-
					-
					-

() 2004-2006

2004 2006

6-9

	2006.12.31	2005.12.31	2004.12.31
	1,656,196,605.38	1,567,979,677.73	1,417,800,226.60
	-	-	-
	88,348,000.33	238,163,756.92	277,678,073.17
	245,653.61	315,948.25	-
	-	-	-
	1,286,866,595.73	1,440,404,386.99	1,286,116,561.06
	194,313,340.94	131,014,480.22	55,489,336.70
	10,101,667,648.74	7,994,885,067.61	6,691,715,611.65
	90,186,512.68	16,905,287.79	64,145,011.53
	6,415,132,799.43	14,467,013,472.87	7,101,962,643.15
	13,165,151.86	4,254,496.77	2,588,688.82
	-	-	-
	-	-	-
	19,846,122,308.70	25,860,936,575.15	16,897,496,152.68
	977,791,228.39	840,805,180.40	782,305,526.58
	-	-	-
	977,791,228.39	840,805,180.40	782,305,526.58
	253,969,711.34	269,707,399.52	279,360,301.98
	250,958,496.07	265,645,320.02	274,681,197.76
	904,747,754.26	945,991,960.62	879,599,297.60
	458,643,732.62	467,265,255.07	419,561,797.98
	446,104,021.64	478,726,705.55	460,037,499.62
	19,318,538.18	21,062,390.38	12,737,882.74
	426,785,483.46	457,664,315.17	447,299,616.88
	-	300,000.00	-
	232,721,129.84	50,964,638.97	9,225,496.99
	-	-	-
	659,506,613.30	508,928,954.14	456,525,113.87
	3,075,268.88	4,859,468.73	4,985,162.86
	2,886,429.14	3,535,065.70	2,415,938.96
	32,102,009.76	-	-
	38,063,707.78	8,394,534.43	7,401,101.82
	-	-	-
	21,521,483,858.17	27,219,065,244.12	18,143,727,894.95

6-10

	2006.12.31	2005.12.31	2004.12.31
	868,426,042.45	7,533,878,484.44	3,343,827,402.55
	10,715,025,641.76	7,103,245,412.53	6,139,078,047.21
	666,870,959.04	1,701,319,418.63	1,047,429,877.90
	5,200,672,766.24	7,818,874,059.87	4,526,285,611.07

6-11

	2006	2005	2004
	76,474,881,917.27	66,596,948,952.20	64,593,457,098.94
	73,996,719,689.88	64,554,759,460.32	62,042,191,685.90
	70,544,330.21	62,890,349.60	40,800,909.14
(“-”)	2,407,617,897.18	1,979,299,142.28	2,510,464,503.90
(“-”)	13,823,930.39	23,454,720.40	19,020,076.32
	809,567,663.50	721,519,078.23	624,135,969.93
	649,576,843.47	564,982,714.16	698,949,059.52
	212,804,587.67	153,446,209.12	273,590,458.38
(“-”)	749,492,732.93	562,805,861.17	932,809,092.39
(“-”)	59,751,088.37	69,022,295.48	43,810,047.04
	-	1,352,447.55	1,511,184.17
	34,779,904.96	38,965,255.12	7,950,480.73
	6,368,805.43	14,910,429.06	17,914,607.77
(“-”)	837,654,920.83	657,235,430.26	968,166,196.56
	290,463,644.93	306,945,683.55	381,430,620.11
	14,529,527.52	19,262,314.20	-13,426,519.63
	-2,021,282.31	1,472,898.06	-2,057,411.60
(“-”)	530,640,466.07	332,500,330.57	598,104,684.48
	1,167,019,830.02	1,033,980,580.33	589,017,028.87
	-	-	-
	1,697,660,296.09	1,366,480,910.90	1,187,121,713.35
	55,953,001.71	34,066,483.88	57,988,862.84
	-	-	28,994,431.42
	1,138,227.88	-	-
	-	-	-
	-	-	-
	-	-	-
	1,640,569,066.50	1,332,414,427.02	1,100,138,419.09
	-	-	-
	-	-	-
	248,091,895.50	165,394,597.00	66,157,838.76
()	-	-	-
	1,392,477,171.00	1,167,019,830.02	1,033,980,580.33

6-12

	2006	2005	2004
	73,848,954,505.3	68,223,385,532.1	63,072,688,734.2
	234,403,427.12	367,242,505.08	274,842,317.30
	291,452,624.49	159,439,872.65	137,079,405.14
	74,374,810,556.9	68,750,067,909.9	63,484,610,456.7
	65,537,893,937.6	71,435,494,388.6	60,714,597,420.8
	300,899,945.38	304,576,750.93	238,411,665.58
	657,619,815.52	663,120,659.92	360,349,561.39
	467,911,953.98	325,385,070.51	292,575,306.64
	66,964,325,652.5	72,728,576,869.9	61,605,933,954.4
	7,410,484,904.36	-3,978,508,960.07	1,878,676,502.25
	-	-	-
	2,356,152.08	20,530,372.56	402,429,376.94
	11,251,135.35	20,220,399.63	32,002,188.32
	28,021,762.58	6,500,677.65	3,874,325.08
	-	457,424,524.08	-
	41,629,050.01	504,675,973.92	438,305,890.34
	241,793,940.84	114,546,010.50	214,847,330.52
	32,737,379.00	134,933,008.28	320,386,232.39
	8,000,000.00	70,933,008.28	20,384,521.78
	4,082,906.01	32,220.00	-
	278,614,225.85	249,511,238.78	535,233,562.91
	-236,985,175.84	255,164,735.14	-96,927,672.57
	-	4,000,000.00	-
	12,891,403,124.2	22,914,948,230.1	20,272,279,104.0
	1,283,321.10	-	6,037,309.29
	12,892,686,445.3	22,918,948,230.1	20,278,316,413.2
	19,355,284,498.0	18,668,625,711.8	22,203,574,607.4
	526,577,920.51	470,692,108.72	294,636,342.11
	249,482.43	127,725.41	144,691.56
	19,882,111,900.9	19,139,445,546.0	22,498,355,641.0

6-13 ()

	2006	2005	2004
1			
	530,640,466.07	332,500,330.57	598,104,684.48
	14,529,527.52	19,262,314.20	-13,426,519.63
	-2,021,282.31	1,472,898.06	-2,057,411.60
	74,216,908.01	55,400,378.39	182,162,236.15
	71,505,087.69	73,644,141.41	56,034,792.21
	1,606,705.69	477,974.13	471,224.05
	648,636.56	729,167.07	865,994.56
()	-8,910,655.09	-1,447,914.15	-408,386.95
()	995,544.11	13,853,417.05	9,236,780.21
()	-20,928,169.88	-150,770.51	6,744,060.15
	-	54,464.16	110,309.82
	214,028,214.55	162,407,793.85	216,401,572.89
()	-142,551,088.37	-28,768,500.55	-46,675,823.04
()	-	-	-
()	8,128,055,146.2	-7,014,531,032.2	2,771,779,063.8
()	-2,067,742,348.0	-498,245,116.46	-139,492,608.45
()	612,369,646.94	3,063,160,854.2	-1,781,521,876.7
		-155,383,563.15	16,233,587.09
	7,410,484,904.3	-3,978,508,960.0	1,878,676,502.2
2			
	-	-	-
	-	-	-
	-	-	-
	-	-	-
3			
	1,656,196,605.3	1,473,575,892.7	1,417,800,226.6
	1,473,575,892.7	1,417,800,226.6	1,856,090,772.9
	-	-	-
	-	-	-
	182,620,712.65	55,775,666.13	-438,290,546.34

() 2004-2006

2004 2006

6-14

	2006.12.31	2005.12.31	2004.12.31
	566,628,236.77	119,016,647.86	64,369,960.39
	30,000,000.00	30,000,000.00	48,000,000.00
	-	-	2,037,200.00
	-	-	-
	-	-	-
	-	-	-
	1,183,505,184.72	3,910,541,540.82	2,206,109,004.64
	-	-	-
	-	-	-
	-	-	-
	10,920,000.00	-	-
	-	-	-
	-	-	-
	1,791,053,421.49	4,059,558,188.68	2,320,516,165.03
	2,024,495,461.38	1,608,768,313.73	1,761,622,512.00
	-	-	-
	2,024,495,461.38	1,608,768,313.73	1,761,622,512.00
	-	-	-
	250,533,635.85	265,008,029.68	273,831,477.30
	12,863,828.75	72,841,347.47	63,261,618.72
	2,797,284.92	62,444,685.37	59,228,407.09
	10,066,543.83	10,396,662.10	4,033,211.63
	-	-	-
	10,066,543.83	10,396,662.10	4,033,211.63
	-	-	-
	-	-	-
	-	-	-
	10,066,543.83	10,396,662.10	4,033,211.63
	-	-	-
	-	-	-
	32,102,009.76	-	-
	32,102,009.76	-	-
	-	-	-
	3,857,717,436.46	5,678,723,164.51	4,086,171,888.66

6-15

	2006.12.31	2005.12.31	2004.12.31
	-	1,430,000,000.00	1,250,000,000.00
	-	-	-
	-	-	-
	-	-	-
	16,180,373.10	15,394,610.33	15,877,190.43
	657,127.15	48,480.39	893,059.80
	-	-	-
	7,761,267.94	15,591.17	120,124.59
	323.81	-	-1,229.68
	537,615,524.72	1,251,586,242.73	50,270,667.81
	-	-	888,000.00
	-	-	-
	-	-	-
	-	-	-
	562,214,616.72	2,697,044,924.62	1,318,047,812.95
	-	-	-
	-	-	-
	-	-	-
	-	-	-
	-	-	-
	-	-	-
	-	-	-
	562,214,616.72	2,697,044,924.62	1,318,047,812.95
	-	-	-
	826,972,985.00	826,972,985.00	826,972,985.00
	-	-	-
	826,972,985.00	826,972,985.00	826,972,985.00
	666,743,607.36	664,357,149.12	626,073,226.71
	409,309,056.38	353,356,054.67	319,289,570.79
	-	135,264,679.96	135,264,679.96
	-	-	-
	1,392,477,171.00	1,136,992,051.10	995,788,293.21
	248,091,895.50	248,091,895.50	165,394,597.00
	3,295,502,819.74	2,981,678,239.89	2,768,124,075.71
	3,857,717,436.46	5,678,723,164.51	4,086,171,888.66

6-16

	2006	2005	2004
	-	-	-
	-	-	-
(“_”)			
(“_”)	-129,980.93	-	-
	-	-	-
	-6,932,394.28	24,178,695.68	99,928,985.79
	-25,963,378.97	-28,650,218.56	-20,655,235.61
(“_”)	32,765,792.32	4,471,522.88	-79,273,750.18
(“_”)	516,068,278.98	336,163,303.69	659,315,203.49
	-	-	-
	18,488,101.52	30,012.20	-
	138,805.33	-	152,824.87
(“_”)	567,183,367.49	340,664,838.77	579,888,628.44
	7,653,350.38	-	-
	-	-	-
	-	-	-
(“_”)	559,530,017.11	340,664,838.77	579,888,628.44
	1,136,992,051.10	995,788,293.21	569,040,797.79
	-	-	-
	1,696,522,068.21	1,336,453,131.98	1,148,929,426.23
	55,953,001.71	34,066,483.88	57,988,862.84
	-	-	28,994,431.42
	-	-	-
	-	-	-
	-	-	-
	-	-	-
	1,640,569,066.50	1,302,386,648.10	1,061,946,131.97
	-	-	-
	-	-	-
	248,091,895.50	165,394,597.00	66,157,838.76
()	-	-	-
	1,392,477,171.00	1,136,992,051.10	995,788,293.21

6-17

	2006	2005	2004
	-	-	-
	-	-	1,996,325.18
	2,854,519,888.33	1,283,248,265.56	253,235,983.03
	2,854,519,888.33	1,283,248,265.56	255,232,308.21
	-	-	-
	13,797,284.80	18,252,358.39	9,832,935.14
	142,402.07	24,947.00	896,406.57
	812,393,609.49	1,667,855,016.63	657,464,961.60
	826,333,296.36	1,686,132,322.02	668,194,303.31
	2,028,186,591.97	-402,884,056.46	-412,961,995.10
	600,000.00	38,480,372.56	402,426,287.90
	428,664,692.65	544,516,189.11	313,383,324.81
	18,120,730.26	53,000.00	800.00
	-	-	-
	447,385,422.91	583,049,561.67	715,810,412.71
	861,396.04	1,075,056.00	1,028,146.00
	276,303,017.00	65,307,408.28	300,391,719.61
	-	5,307,408.28	100,000.00
	-	32,220.00	-
	277,164,413.04	66,414,684.28	301,419,865.61
	170,221,009.87	516,634,877.39	414,390,547.10
	-	-	-
	6,880,000,000.00	4,440,000,000.00	3,840,000,000.00
	-	-	-
	6,880,000,000.00	4,440,000,000.00	3,840,000,000.00
	8,310,000,000.00	4,260,000,000.00	3,740,000,000.00
	320,546,530.50	238,976,408.05	85,198,886.76
	249,482.43	127,725.41	144,691.56
	8,630,796,012.93	4,499,104,133.46	3,825,343,578.32
	-1,750,796,012.93	-59,104,133.46	14,656,421.68
	-	-	-
I()	447,611,588.91	54,646,687.47	16,084,973.68

6-18

()

fl Ț 2004

2004

40% 30%
2004 12 31 10%
90%

fl Ț 2005

1

2005

“ ” 51%

90%

100%

2

100%

90%

2005

12 31

100%

fl Ț 2006

1

2

2006

fl Ț 2007 1-6

1

100%

2

80%

3

2,480

3,472

40%

56%

()

2004 1 1

85.88%

6-19

	2006	12	31		2006	12	31
			2,776,671,631.14				2,158,426,042.45
							12,360,625,641.76
			93,548,000.33				1,499,215,098.81
			245,653.61				5,348,964,340.77
							175,193,280.35
			1,158,829,474.86				33,135,918.83
			202,982,545.08				
			10,299,676,252.05				172,117,484.47
			90,186,512.68				33,037,460.31
			7,060,797,654.89				1,446,293,851.30
			13,354,847.86				19,876,057.51
			21,696,292,572.50				
							23,246,885,176.56
			665,539,802.43				
							217,424,410.60
			665,539,802.43				
			4,896,473,478.31				217,424,410.60
			990,383,208.01				
			3,906,090,270.30				
			19,318,538.18				
			3,886,771,732.12				23,464,309,587.16
			691,127.00				
			680,399,079.06				236,605,268.02
			4,567,861,938.18				
							826,972,985.00
			42,840,282.85				
			8,905,167.96				826,972,985.00
			32,102,009.76				666,743,607.36
			83,847,460.57				409,309,056.38
							1,409,601,269.76
							3,312,626,918.50
			27,013,541,773.68				27,013,541,773.68

6-20

	2006	2005	2004
	78,646,247,629.88	69,929,844,467.20	67,164,332,236.86
	75,166,982,118.29	67,345,420,988.64	64,315,239,061.44
	111,561,082.83	78,023,044.93	60,998,913.00
“-”	3,367,704,428.76	2,506,400,433.63	2,788,094,262.42
“-”	74,798,202.88	58,173,208.02	41,273,420.01
	940,675,224.99	820,270,102.60	686,455,704.73
	716,126,175.77	640,586,586.07	722,801,748.01
	459,730,243.63	274,875,348.80	340,128,341.23
“-”	1,325,970,987.25	828,841,604.18	1,079,981,888.46
“-”	-29,328,422.70	27,709,482.12	14,973,654.18
		1,352,447.55	1,511,184.17
	35,863,089.21	40,236,598.90	12,417,183.98
	7,902,206.78	16,539,717.04	22,420,301.34
“-”	1,324,603,446.98	881,600,415.71	1,086,463,609.45
	438,939,927.47	377,828,172.53	400,582,092.31
	72,573,029.89	45,957,835.38	5,363,045.08
	-2,021,282.31	1,472,898.06	-2,057,411.60
“-”	811,069,207.31	459,287,305.86	678,461,060.46

()

	2007 1 6	2006	2005	2004
	1.05	1.10	1.08	1.11
	0.61	0.75	0.47	0.64
	20.96	51.20	45.37	61.70
	4.20	7.04	5.95	7.30
()	0.29	0.22	0.07	-0.53
()	-1.05	8.96	-4.81	2.27
	2007.6.30	2006.12.31	2005.12.31	2004.12.31
()	4.20	3.99	3.59	3.34
(%)	13.39%	14.57%	47.49%	32.26%

()

	2007 1-6	2006	2005	2004
% ()	11.08	16.10	11.21	21.63
% ()	11.12	16.96	11.67	24.11
()()	0.466	0.642	0.402	0.72
()()	0.466	0.642	0.402	0.72

	2007 1-6
	131,295.00
	1,377,945.82
	-409,268.90
	1,099,971.92
	-13,596.69
	1,086,375.23

()

6-21

2007 1 1 -2008 12 31

	2006	2007 1 1 -12 31				2008 1 1 - 12 31
		1 -6	7 -11	12		
	76,494,268,448.59	37,384,543,140.74	37,312,514,967.71	3,808,614,755.32	78,505,672,863.77	35,448,677,198.95
	74,002,282,290.81	35,789,301,485.82	35,796,726,338.12	3,608,526,837.63	75,194,554,661.57	30,697,669,932.43
	70,544,330.21	103,018,263.23	203,995,053.15	31,279,137.19	338,292,453.57	471,348,379.49
	809,567,663.50	313,304,366.91	244,671,835.08	50,059,666.03	608,035,868.02	800,433,994.23
	658,159,935.46	357,254,169.67	246,546,862.25	99,254,426.88	703,055,458.80	942,928,899.85
	212,804,587.67	23,571,531.62	130,501,719.58	-90,734,794.25	63,338,456.95	221,484,445.69
	74,216,908.01	359,043,754.94	-20,067,938.49	61,551,183.55	400,527,000.00	84,300,000.00
	148,956,737.11	98,006,298.00	68,968,593.39	8,727,107.59	175,701,998.98	22,250,000.00
	815,649,470.04	537,055,866.55	779,109,691.41	57,405,405.88	1,373,570,963.84	2,252,761,547.26
	34,779,904.96	2,525,242.52	1,362,612.06		3,887,854.58	
	6,368,805.43	1,016,001.70	6,567,922.81		7,583,924.51	
	844,060,569.57	538,565,107.37	773,904,380.66	57,405,405.88	1,369,874,893.91	2,252,761,547.26
	261,185,754.14	148,604,948.38	112,568,881.15	144,561,965.13	405,735,794.66	550,669,878.25
	582,874,815.43	389,960,158.99	661,335,499.51	-87,156,559.25	964,139,099.25	1,702,091,669.01
-- 08 1 31						61,360,000.00
.1	568,345,287.91	385,047,805.12	657,595,631.92	-87,156,559.25	955,486,877.79	1,557,780,318.14
-- 08 1 31						52,695,968.00
.2	14,529,527.52	4,912,353.87	3,739,867.59		8,652,221.46	144,311,350.87

6-22

2007 1 1 -2008 12 31

	2006	2007 1 1 -12 31				2008 1 1 - 12 31
		1 -6	7 -11	12		
	541,564.00	305,878.81	392,058.00	1,102,063.19	1,800,000.00	1,600,000.00
	671,544.93	429,955.00	444,005.97	26,039.03	900,000.00	800,000.00
	38,721,441.77	29,880,403.28	7,200,042.30	3,609,554.42	40,690,000.00	30,657,500.00
	-25,963,378.97	-16,340,392.48	-6,117,551.72	-1,542,055.80	-24,000,000.00	-20,100,000.00
	37,146,163.95	84,660.18		-84,660.18		
	607,295,210.03	95,018,643.08	68,307,773.44	7,476,885.70	170,803,302.22	16,500,000.00
	557,261,002.35	81,269,895.91	67,173,334.89	6,570,071.42	155,013,302.22	6,742,500.00
	18,488,101.52					
	138,805.33					
	575,610,298.54	81,269,895.91	67,173,334.89	6,570,071.42	155,013,302.22	6,742,500.00
	1,323,343.35	-1,213,420.01		10,252,721.66	9,039,301.65	1,685,625.00
	574,286,955.19	82,483,315.92	67,173,334.89	-3,682,650.24	145,974,000.57	5,056,875.00

()

1

2006 -2007 6

2007

2008

2006

3

2

1

2

3

4

2008 1 1

25% 2007

33% 2008

25%

5

6

3

1

2008 1

2

2008 1 31

3

61.87%

2008 2 1

2008 12 31

85.88%

4

2008

2008

2008 1 31

2008 1 1 1 31

5 2007

4

	2007		2008	
	/	/	/	/
	1,620,000	1,693,600	1,700,000	1,778,280
	2,835,000	2,885,600	2,800,000	2,819,880
	3,100,000	3,214,600	3,350,000	3,375,330
	820,000	827,150	860,000	868,508
	1,100,000	1,169,700	1,220,000	1,228,185
	790,000	786,000	700,000	665,000
	1,070,000	230,000	941,550	230,000
	480,000	138,000	505,200	138,000
	600,000	530,000	621,800	530,000
	2,050,000	2,050,000	2,500,000	2,500,000
	9,500,000	9,500,000	9,520,000	9,520,000
	5,600,000	5,600,000	5,020,000	5,020,000
	900,000	900,000	900,000	900,000
	1,500,000	1,500,000	1,700,000	1,700,000
	1,400,000	1,400,000	1,500,000	1,500,000
	400,000	400,000	400,000	400,000
6517	22,000	23,000	33,000	35,000
7016	22,000	16,500	16,500	16,500
7216	22,000	16,500	16,500	16,500
60	44,000	44,000	36,800	36,800
68/18	67,430	60,604	110,968	100,780
C1000	13,804	9,459	21,692	15,301
12#			89,320	87,459
	43,000,000	43,000,000	51,000,000	51,000,000
	3,300,000	3,300,000	3,600,000	3,600,000
5				
1				
2007	7,850,567	2006	7,649,427	
210,140	2.63%	2008	8,544,868	2007
694,301	8.84%			
2007	2008			

	2006				; 2008
		2008			
3					
2007	4.22%	2006	3.26%	0.96	2008
	5.56%	2007	1.34	2007	
			2006		
	2008			2008	
		2008		80	
17.09%					
(4)					
2007		33,829	2006	7,054	
26,775	379.57%	2008		47,135	2007
	13,306	39.33%			
	2006				
			5%	15%	
		10%	15%		
(5)					
2007		60,804	2006	80,957	20,153
	24.89%	2008	80,043	2007	
19,239	31.64%				
			2007	2008	

2007 2006 2008

2007 2008

2008 1.21

(6)

2007 70,306 2006 65,816 4,490

6.82% 2008 94,293 2007 23,987

34.12%

2006 2007 2008

2007 2008

2008 2008

2008 16,641

(7)

2007 6,334 2006 21,280 14,946

70.23% 2008 22,148 2007

15,814 249.67%

2007

2008

2008

2008

2008
 (8)
 2007 40,053 2006 7,422
 32,631 439.65% 2008 8,430 2007
 31,623 78.95%
 2007 2008
 2007

2008
 (9)
 2007 17,570 2006 14,896 2,674
 17.95% 2008 2,225 2007 15,345
 , 87.34%
 2006 2007
 2008

2008
 (10)
 2007 40,574 2008 55,067
 2007 33% 2008 25%

6
 %

&



1

“

2006

3

”



()

2004 2007 6 30

	2007.6.30		2006.12.31		2005.12.31		2004.12.31	
	214,636.53	7.76%	174,454.46	8.11%	180,614.34	6.64%	169,547.83	9.34%
	1,247,477.47	45.09%	1,158,284.76	53.82%	956,630.39	35.15%	803,332.15	44.28%
	1,055,313.37	38.14%	641,513.28	29.81%	1,446,701.35	53.15%	710,196.26	39.14%
	17,842.76	0.64%	-	-	-	-	-	-
	123,334.29	4.46%	97,779.12	4.54%	84,080.52	3.09%	78,230.55	4.31%
	1,147.03	0.04%	-	-	-	-	-	-
	77,481.01	2.80%	65,950.66	3.06%	50,892.90	1.87%	45,652.51	2.52%
	672.21	0.02%	3,806.37	0.18%	839.45	0.03%	740.11	0.04%
	28,628.06	1.03%	-	-	-	-	-	-

2007 1 1

1

(1)

2004 2007 6 30

	2007.6.30	2006.12.31	2005.12.31	2004.12.31
	358	351	271	232
	165,049	162,278	145,209	117,003
()	24,481	2,991	11,318	24,545
	189,889	165,620	156,798	141,780

2005 12 31 156,798 2004 15,018
 39.79
 41.9 38.7
 2.55 2006 12 31 165,620
 2005 2007 6 30 189,889
 2006 24,269
 10%

(2)

(3)

	2007.6.30	2006.12.31	2005.12.31	2004.12.31
	21,723	8,835	23,816	26,866
	3,025	-	-	902

2004 2006

2005 12 31 144,040
 5% 2004 14,565

2006 12 31 128,687 (()
 6%) 2005 9,414

2007 6 30 179,921 (()
 6.5%) 2006 51,234

2004 2006

1	5%
1-2	30%
2-3	50%
3	100%

2007 1 1

1 500
 1 -2
 800 2
 2,000

1	5%
1-2	30%
2-3	50%
3	100%

(2)

2004 2007 6 30

	2007.6.30		2006.12.31		2005.12.31		2004.12.31
		(%)		(%)			

2007 6 30 28,649 2006
9,218

(3)

	2007.6.30	2006.12.31	2005.12.31	2004.12.31
	(%)			

2005 12 31 1,446,702
 53% 2004 736,505 104%
 05
 130.53 73% 20%
 90%
 2006 12 31 641,514
 30% 2005 805,188 56%
 06
 2007 6 30 1,055,312 38%
 06 413,798

7-1 2004

	415	327	-51.2%	8	-3.6%	80	64.6%
	99	18	-51.4%	68	448.0%	13	-67.5%
	147			118	-3.1%	29	751.4%
	396			366	-14.7%	30	136.2%
	302	286	4.1%			16	554.1%

7-2 2005

	1,109	265.19	-18.9%	27.35	214.00%	816.60	30.03%
	323	1.24	93.30%	54.41	-19.70%	267.45	25.56%
	605	455.48	59.2%			149.09	844.20%
	186			117.71	-0.80%	68.05	128.35%
	465	10.28		394.94	7.80%	59.95	96.55%

7-3 2006

--	--	--	--	--	--	--	--

	1,202	64	-75.80%	71	131.01%	1,067	30.60%
	594	-	-	47	-13.10%	547	104.60%
	790	489	7.40%	-	-	300	101.30%
	235	-	-	151	28.50%	83	22.20%
	420	11	3.90%	353	-10.50%	57	-5.60%

2004 2006

2007 1 1

4

2007 6 30

17,842.76

5

2004 2007 6 30

	2007.6.30	2006.12.31	2005.12.31	2004.12.31
	-	800	-	34
	1,811	1,811	1,811	8,852
	113,131	57,575	44,116	40,403
	16,739	20,829	12,214	5,996
	0	25,397	26,971	27,936
	8,347	8,633	1,032	4,990
	123,334	97,779	84,081	78,231

2005	12	31			84,081	
3.09%	2004		5,850		7.48%	(1)
						6,200
			4,000			2,200 (2)
			3,700	(3)		()
			6,000	(4)		960
2006	12	31			97,779	
4.54%	05		13,698		16.29%	(1)
2250					(2)	
			13,800	(3)	1,500	
2007	6	30			123,334	
4.46%	06		48,009		(1)	
49,198						9,392 (3)
			9,705	4		
	2007				876	
6						
	2007	6	30		1,147.03	

7
2004

	29,581.24	23,146.24	13,221.92	12,878.30	9,132.23	87,959.93
	19,021.52	7,035.93	9,310.00	5,674.96	913.77	41,956.18
	329.62	793.29	12.52	138.35	-	1,273.79
	10,230.11	15,317.02	3,899.39	7,064.98	8,218.46	44,729.96

2005

	34,265.49	23,496.30	14,718.17	14,181.16	7,938.08	94,599.20
	20,716.16	7,171.53	9,717.74	7,010.67	2,110.42	46,726.53
	1,162.07	793.29	12.52	138.35	-	2,106.24
	12,387.26	15,531.47	4,987.90	7,032.15	5,827.65	45,766.43

2006

	34,535.84	24,254.53	9,365.57	15,128.61	7,190.21	90,474.78
	21,551.09	8,615.65	4,189.13	8,248.08	3,260.42	45,864.37
	1,162.07	769.78	-	-	-	1,931.85
	11,822.69	14,869.10	5,176.45	6,880.53	3,929.78	42,678.55

2007 6 30

--	--	--	--	--

	2007.6.30	2006.12.31	2005.12.31	2004.12.31
	302.77	307.53	316.28	335.15
	-	-	19.64	21.71
	14.26	-	150.03	141.66
	317.03	307.53	485.95	498.52

2005 12 31 486
 0.1% 04 14 2006 12 31 308
 0.1% 2005 178 2007 6 30
 317 0.01%

9

7-4 2004

			(%)
	139,801.16	10,889.50	7.79%
	16,891.09	11,342.15	67.15%
	712,381.12	2,184.86	0.31%
	83,220.74	4,990.19	6.00%
	87,959.93	1,273.79	1.45%
	1,568.96	1,070.44	68.23%

7-5 2005

			(%)
	154,066.05	10,025.61	6.51%
	26,344.37	13,242.93	50.27%
	1,457,107.13	10,405.78	0.71%
	85,112.20	1,031.69	1.21%
	94,599.20	2,106.24	2.23%
	1,556.39	1,070.44	68.78%

7-6 2006

			(%)
	144,651.71	15,965.05	11.04%
	31,708.65	12,277.31	38.72%
	644,061.17	2,547.89	0.40%
	106,412.58	8,633.45	8.11%
	90,474.78	1,931.85	2.14%
	307.53	-	0.00%

2004 2005 2006

8,280

10

2007 6 30

28,628.06

()

2004 2007 6 30

	2007.6.30		2006.12.31		2005.12.31		2004.12.31	
	278,322	11.54%	86,843	4.77%	753,388	31.09%	334,383	21.74%
	1,243,192	51.53%	1,071,503	58.90%	710,325	29.31%	613,908	39.91%
	234,805	9.73%	66,687	3.67%	170,132	7.02%	104,743	6.81%
	555,019	23.01%	520,067	28.59%	781,887	32.26%	452,629	29.43%
	-	-	16,279.97	0.9%	12,409.62	0.51%	15,943.99	1.04%

	2007.6.30		2006.12.31		2005.12.31		2004.12.31	
	-	-	2,450.77	0.14%	1,939.68		2,175.22	0.14%
	23,302.71	0.97%	-	-	-	-	-	-
	26,303	1.09%	31,885	1.75%	21,223	0.88%	19,171	1.25%
	18,291	0.76%	18,294	1.01%	18,292	0.75%	13,281	0.86%
	4,797.09	0.2%	-	-	-	-	-	-

2007 1 1

%

2004 2007 6 30

	2007.6.30	2006.12.31	2005.12.31	2004.12.31
	278,322.45	66,842.60	742,946.58	331,882.74
	-	20,000.00	-	-
	-	-	1,057.00	2,500.00
	-	-	9,384.27	-
	278,322.45	86,842.60	753,387.85	334,382.74

2005 12 31

753,387.85

2004

419,005.11

2005

2006 12 31

86,842.60

2005

666,545.25

2006

2007 6 30

278,322.45

2006

&						
	2005	12	31		710,324.54	
29.31%	2005					2004
	2006	12	31		1,071,502.56	
58.90%	2005			361,178	2006	
	2007	6	30		1,243,192	52%
						1 6
,						
	2005	12	31		170,131.94	7.02%
2004				65,388.95	2005	
	2006	12	31		66,687	3.67%
2005				103,445		
						2006
	2007	6	30		234,805	9.73%
2006				166,152	:	

<hr/>							
	(
		2005	12	31	781,887		32.26%
2004				329,258			
		2006	12	31	520,067		28.59%
2005				261,820			
		2007	6	30	555,019		23%
2006				34,952	2006		
)						
		2007	6	30	23,302.71		
	*						
		2005	12	31	-49,185	2004	-29,838
		2006	12	31	3,137	2005	52,322
		2007	6	30	27,996	2006	25,423
				1		2	
	+						
		2005	12	31	21,223	2004	
2,052		2005					

2006	12	31	31,885	2005	
10,662	2006		1		
			2		
2007	6	30	26,303	2006	
4,403					
2005	12	31	18,292	2004	5,011
2006	12	31	18,294	2005	2
2005					
2007	6	30	18,291	2006	
2007	6	30	4,797.09		

()

7-7 2004 2007

	2007.6.30	2006.12.31	2005.12.31	2004.12.31
	1.05	1.1	1.08	1.11
	0.61	0.75	0.47	0.64
%	87.19	84.53	89.03	84.78
	2007	2006	2005	2004
	23.85	3.39	2.99	4.54

1 ()/

2

2005

2006

84.53%

4.5

2005

2007 6 30

1.05 0.61

1

23.85

3.1

4.5

()



2006 764.75 2005 14.83%

2006

2005 12.20% 2006

2006

2005

2007 1-6 373.84 14.91

4.16%

2

	2007	1-6	2006		2005		2004	
	379,532	10.15%	863,931	11.30%	763,681	11.47%	395,077	6.12%
	643,055	17.20%	2,134,458	27.91%	2,368,726	35.57%	3,029,938	46.91%
	2,626,924	70.27%	4,514,348	59.03%	3,357,344	50.41%	2,950,792	45.68%
	138,969	3.72%	214,610	2.81%	170,509	2.56%	165,301	2.56%
	18,708	0.50%	107,667	2.45%	204,802	3.08%	88,178	1.37%
	-68,734	-1.84%	-187,526		-205,368	-3.08%	-169,94	-2.63%
	3,738,424	100%	7,647,488	100.00%	6,659,695	100.00%	6,459,346	100.00%

97% 2004 2006

2004 46.91% 2006 27.91%

2004 45.68% 2006 59.03%

2005

2004

2007

48.99%

()

2004 2007 6 30

	2007 1-6	2006	2005	2004
	7.65%	7.37%	11.44%	20.53%
	5.48%	1.25%	1.67%	3.01%
	2.98%	2.45%	1.20%	2.75%
	7.69%	10.03%	10.30%	7.97%
	41.44%	46.01%	42.80%	22.33%
	84.80%	20.65%	5.70%	9.05%
	2.75%	2.68%	1.54%	12.73%
	4.27%	3.24%	3.07%	3.95%

2004 20.53% 2005 2006

2004

2004 400 / 2005

2005

150 / 2005

0 5%

2005 7

2004 2006 2% 2005 1.2%

2004 2005

2005

2005

2007 4.27%

()

2004 2007 6 30

	2007 1-6	2006	2005	2004
()	3,738,423.73	7,647,488.19	6,659,694.90	6,459,345.71
()	149,234.75	240,761.79	197,929.91	251,046.45
()	9,800.63	5,975.11	6,902.23	4,381.00
()	31,330.44	80,956.77	72,151.91	62,413.60

2004 15,565 8% 2005
 15,345 2004 44%
 15,351 14%
 2004
 2006 167,195 2005
 16% 2005 39%
 2006 80,957 2005 12%
 50%
 2006 64,958 15%
 26,680 41% 2005
 7% 37%
 V5 2006 21,280
 2005 39%
 007 69,413
 7,524 6,600
 ERP 1,092
 12,189
 3
 2007 35,904.38
 4

	2007 1-6	2006	2005	2004
	-	-	-	601.77
	-	-	-	-60.27
	-	-	-	-
/()	-	-	-	-
	-	-	-	541.50
	-	-	-	-
	457.01	898.65	1,176.20	900.87
	9,343.62	14,134.63	4,872.51	4,061.29
/	-	-842.45	-937.02	-836.08
	-	-	-	-
	-	64.28	-2,234.84	-
	-	-8,280.00	4,025.38	-286.58
	-	5,975.11	6,902.23	3,839.50
	9,800.63	5,975.11	6,902.23	4,381.00

2004 601.77

-60.27 03 03 2005

2004 2006

2007

2004 2007

2006 2006

2004 2006 /

2005

2,217.12

4,025.38

2006 8,280 , ,

8,280

,

4,280

5

	2007.6.30	2006.12.31	2005.12.31	2004.12.31

+

2004 2005 2006 5.98 3.33 5.31 2005

1 2004 2005

2005

40%

2 2005

0% 5%

2005 7

2%

2005

3

2005

()

2004 -2006

7-9 2004

1		1,057,885	16.38%	13,146	5.15%
2		646,175	10.00%	13,557	5.31%
3		734,530	11.37%	12,704	4.98%
4		728,808	11.28%	10,983	4.30%
5		395,348	6.12%	6,923	2.71%
6		303,926	4.71%	12,257	4.80%
7		375,980	5.82%	2,327	0.91%
8		279,553	4.33%	4,276	1.68%
9		201,591	3.12%	46,076	18.06%

10		169,621	2.63%	9,698	3.80%
		4,893,417	75.76%	131,947	51.72%

7-10 2005

1		959,111	14.40%	15,169	7.43%
2		953,367	14.32%	6,542	3.20%
3		496,517	7.46%	5,576	2.73%
4		462,196	6.94%	-16,000	-7.83%
5		379,472	5.70%	-18,000	-8.81%
6		376,371	5.65%	3,991	1.95%
7		284,239	4.27%	28,303	13.86%
8		438,873	6.59%	14,496	7.10%
9		271,341	4.07%	10,114	4.95%
10		243,762	3.66%	58,019	28.41%
		4,865,249	73.06%	108,210	52.99%

7-11 2006

1		1,239,910	16.21%	13,823	5.58%
2		605,834	7.92%	2,446	0.99%
3		671,134	8.78%	6,960	2.81%
4		564,614	7.38%	8,567	3.46%
5		591,891	7.74%	8,888	3.59%
6		505,972	6.62%	5,608	2.26%
7		389,151	5.09%	9,150	3.69%
8		219,557	2.87%	10,549	4.26%
9		463,543	6.06%	4,749	1.92%
10		250,734	3.28%	7,374	2.98%
		5,502,340	71.95%	78,114	31.52%

2004 2005 2006

70% 2004 2005
 50% 2006 31.52% 2006

7-12 2007

		2007 1-6	2007 1-6 %	2006 1-6	2006 1-6 %
1		65.94	17.64	1.39	8.71
2		31.42	8.40	0.52	3.26
3		30.3	8.11	0.71	4.45
4		24.84	6.64	0.32	2.01
5		24.1	6.45	0.55	3.45
6		20.22	5.41	0.34	2.13
7		19.18	5.13	0.5	3.13
8		17.71	4.74	0.17	1.07
9		16.08	4.30	0.47	2.95
10		14.27	3.82	0.38	2.38
		264.06	70.63	5.35	33.54

2007

70%

33.54% 2007

80%

()

3 2006

2005

() 2004 2007 6 30

1 2004

1 1800

40%

2

40% 30%

2004 12

31

10% 90%

2 2005

1 METAL ONE

1000

600

60% METAL ONE

400

40%

2

1000

300

30

400

40

3

100

10%

4

()

6

6000

10

5				
	51%		254	
6				
				100%
10%		90%		90%
			6,839.30	530.74
	4,776.66		1,531.90	
3 2006				
1				1000
	800		80%	200
20%				
2				2
	93.33%		5%	1.67%
3				
8,434		1.5		94.10%
	3.84%		2.06%	
4				390.31
	7,400			94.80%
5.20%				
5	()			“ ”
	()		7500	
	3375			2250
	937.5			
6				
			500	500
	100%			

7

50 10 450

90

8

50 10 450

90

9

10 746

10 ()

“ ” “ ”

“ ” ()

6200 , 2,480 40%

35% 16% 9%

4 2007 1 6 30

1 ()

2480 3472

40 56%, 558

9

2

50 100%

3 2500

3000 90% 98.33%

10% 1.67% 1.67%

50
4
1000 800 “ ” 80 200
20
5)
195,778.21 289,849.58
61.87 24.01

() 2007

2006 1083
4300
47.22 45.72 1.97
1.5 25 22.22
2007 10.56
2009 150
/
+

() 2004 2006

- 1 2004
- (1) 2004
- (2)

2004

1	1%	5%
1—2	10%	30%
2—3	15%	50%
3	-	100%
3—5	30%	-
5	100%	-

2004 10 30

<

>

2004

67,093,437.86

2 2005 2006

2005 2006

()

2007 1 1

1 2 —

2 3 —

3 18 —

4 22 —

5 22 —

fl Ț

“ + ”

fl Ț

2007-2010

()

2007 2010

fl 七

()

()

1 2004 8 27

8,280

2004 9 23

4,000

4,280

2007 1 4

2005

185

2004 8 27

2007 1 10

2 2005 9 ,

2,999.72
 3 2005 10
 3,140.40 2006 8 1
 3,012.27
 2007 2
 7,050,680.57 23,071,991.18
 4 2006 10
 “ ”
 3,758.91 2007 6 11
 2007 5 31 3,812.19
 2007 6 11
 5 2006 3
 “ ”
 “ ”
 “ 7”
 7,076
 3,507 2007 9 3
 1995
 125 2005 10 18
 1,432,89\$

6 2007 1

“ ”

“ “ 6,319

3,000

” “

” “ 2007 1

” “

6319.053

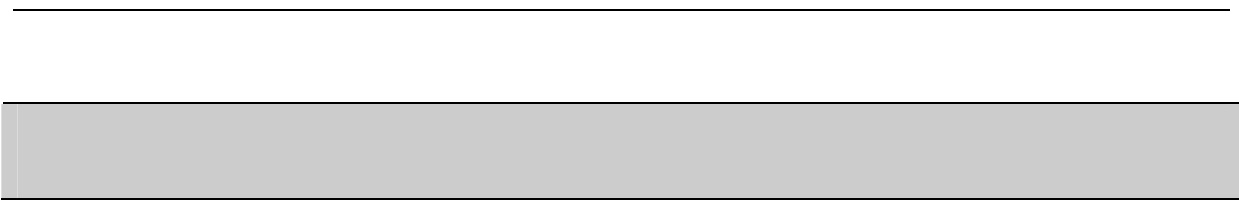
2007 7

()

5

1

8,280



()

2007 6 30

826,972,985

10 3

248,091,896

446,565 ()

(1)

(2)

2007 9 10

2007

()

2007 9 10

2007

“

”

()

1

	49.88%	11.99%		61.87%
	45.62			
227,535.77		54,702.07		282,237.85
				85.88%

2

()

282,237.85

1

(1)



7.75%

1,000

7.75%

500

3.88%

12900

16100

B 2002 15,800

2002 9 8

15,800

2002 12 9

2002 176

2002 10 29

15,800

		%		%		%			%
	6580	51.01	6580	41.64	6580	51.01		6580	41.64
	3220	24.96	3220	20.83	3220	24.96		3220	20.83
			1000	6.33			1000	1000	6.33
	600	4.65	1000	6.33	600	4.65	400	1000	6.33
	1000	7.75	1000	6.33	1000	7.75		1000	6.33
			1000	6.33			1000	1000	6.33
	1000	7.75	1000	6.33	1000	7.75		1000	6.33
	500	3.88	1000	6.33	500	3.88	500	1000	6.33
	12900	100	15800	100	12900	100	2900	15800	100

C 2002

2003 3 20

7.75%

1000

2003 3 20

3.88%

1000

2003 3 21

(

)

2003 3 22

16100 15800

		6580	41.64%
		3220	20.38%
		1000	6.33%
		1000	6.33%
		1000	6.33%
		1000	6.33%
		1000	6.33%
		1000	6.33%

D 2003

2003 7 1

6.33%

1000 2003 7 1

6.33%

1000 2003 7 4

E 2003 60,000

2003 9 8

		%			%
	6580	41.65	17920	24500	40.83
	3220	20.83	9780	13000	21.67
			12000	12000	20.00
	2000	12.66	1000	3000	5.00
	1000	6.33	1000	2000	3.33
	1000	6.33	1000	2000	3.33
	1000	6.33	1000	2000	3.33
	1000	6.33	500	1500	3.33
	15800	100.00	44200	60000	100.00

2003 9 15

4.42 1.58 6

2003 9 16

17920

2003 10 10

60000

2003 12 31

2003 186

2003

12 26

42,200

60,000

F 2006

2006 10 28

5%

2006 11 12

2006

6 30

5%

2006 11 13

5%

5%

2006 6 30

G 2007 969,915,660.48

2007 3 27

969,915,660.48

2007 6 15

2007 3 27

2007 22
969,915,660.48

2007 3 27
969,915,660.48





	2003	6			1	180		2	450 m ³
100		1	100	LF	1	VOD			
		200							
							2800	2450	
									2800
2450									

2006

158

2005

100%

2006

136.79

136.81

100.01%

(6)

2006 12 31

2007 6 30

2006 1-6

2007 1-6

2007

NZ 010613

	2007 6 30	2006 12 31
	2,627,477,013.98	2,110,639,813.33
	7,440,898,415.22	6,071,292,590.05
	3,922,207,112.12	4,589,359,206.36
	3,957,659,512.12	4,623,840,146.36
	3,483,238,903.10	1,447,452,443.69
	-	-
	3,483,238,903.10	1,447,452,443.69

	2007 1-6	2006 1-6
	4,250,725,351.87	2,940,253,671.04
	3,372,740,691.99	2,413,205,824.84
“_”	593,647,861.88	234,854,501.26
“_”	593,769,854.41	239,586,094.69
	177,038,883.13	87,446,687.95
“_”	416,730,971.28	152,139,406.74

	2006	2005	2004
	6,483,614,211.96	5,025,347,142.75	3,866,053,497.76
	1,001,412,456.39	522,402,669.13	298,240,748.41
	60,974,272.49	34,718,487.62	22,253,343.69

600001		2.19%	12.21%
600005		6.03%	21.29%
600010		2.53%	8.12%
600019		4.32%	16.74%
600102		3.86%	10.52%
600126		2.09%	6.00%
600231		3.15%	12.28%
600282		6.24%	10.16%
600307		1.74%	9.20%
600569		2.94%	11.24%
600808		2.51%	10.90%
600894		0.92%	5.67%
000961		0.22%	8.69%
600117		2.04%	15.35%
600399		0.40%	6.48%
		2.99%	11.11%

2007 6 30

12% 20%

456,200.00

61.87% 282,237.85

3

	%	%
	49.88	-
	24.01	85.88
	11.99	-
	5.18	5.18
	3.45	3.45
	1.67	1.67
	1.60	1.60
	1.11	1.11
	1.11	1.11
	100	100

4

(1)

“ ”

(2)

2004

2006

29.90

71.29%

13.23

48.70%

(3)

61.87%

2006

3.24% 16.1% 0.64

4.42% 24.48%

2007

0.95

1.08

(4)

(5)

1

(1)

			2004			2005					
			2003	12	31	2004	12	31	2005	12	31
2006	12	31		135.38		91.84		147.84		114.57	
		122.41									2003
		50%			55.44%						

(2)

			2001			
			2006	764.75	31.34%	2001
195.65		2006				

(3)

2002
2002 2 21 5.31% 2007 7 20 6.84%

(4)

2

(1)

= ×
= ×6.84%

5

0.34

(2)

ROE



[1998]91
A 34,088,710 1998 8 17
220,277,951.95
1998 9 8 (98)

103

()

9-1

	1998			
	1998	1999		
	500	2,500	3,000	-1,444
“ ”	4,500	-	4,500	418
	7,250	-	7,250	68,773

	21,750	23,030	1,280	-
--	--------	--------	-------	---

1 1999 9

1999

8,280

7,000

1,280

2

:

	3,750	-1,444	-5,194	2
“ ”	4,500	418	-4,082	3
	6,800	68,773	61,973	4
	-	-5,854	-	5

2

3,000

2000 1

2,408

2002

592

2007

6 30

3

4,500

“

”

350

4

4,150

“

”

“

”

2007 6 30

4

1998

7,250

1997

32,000

15

37,000

3,000

7,250

800

11.03

1999 2007

6,800

1998

1998

1999

1999

2007

102,301.13

119,834.43

12,634

7,250

68,773

5

8,280

7000

1280

2007 6 30

8,280

2,426

5,854

3

% 1998

A 1998

	7,000		7,000	0
	3,000		3,000	500
“ ”	4,500	“ ”	4,500	4,500
	7,250		7,250	7,250

B

99

98

97

1998 8 31

1998

4

4500

350

1998

7

13

98 9

350

C

& 1999

A



2007 8 5 [

2007 010208]

1998



()





()





(<http://www.minlist.com.cn>)

(<http://www.sse.com.cn>)